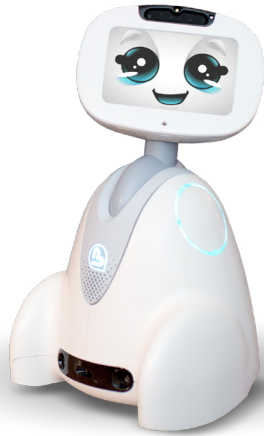


A ROBOTICS PLATFORM TO IMAGINE UNIQUE APPLICATIONS



A COMPLETE TURNKEY SOLUTION

Software development Kit (SDK) : voice interaction, image processing, motion, heat and noise detection, people recognition, robot movement, head movements, facial expressions, object recognition, access to cloud APIs ...).

A DEDICATED SUPPORT PORTAL WITH TUTORIALS TO TAKE CONTROL OF ALL THE TOOLS AND REALIZE YOUR FIRST APPLICATIONS

Entirely designed and manufactured in France, Buddy is an "emotional companion" robot. This adorable personal robot can improve everyone's life. Its possibilities are limitless, since it is open to the developers' community who will be able to create new applications and skills and distribute them via our store or integrate them into dedicated service offers.

Designed to be compatible with the most popular development tools (Unity 3D, Android, Arduino), Buddy is the robotic solution that any developer dreams of having to imagine and create new applications and accessories: an open, programmable and scalable platform to give life to a companion with an incredible potential. The only limit of use is the imagination to achieve great things together !!

«We chose Buddy because we really believe in this robot. It is the only companion for us which today brings together all the essential ingredients to successfully penetrate our homes. We are very happy to be among the first partners for distribute our fabulous apps and give Buddy a spark of life.»

Franck Calzada
CEO & Founder of Intuitive Robots



AN ACCESSIBLE AND POWERFUL IDE



BUDDY SDK - WEBSITE



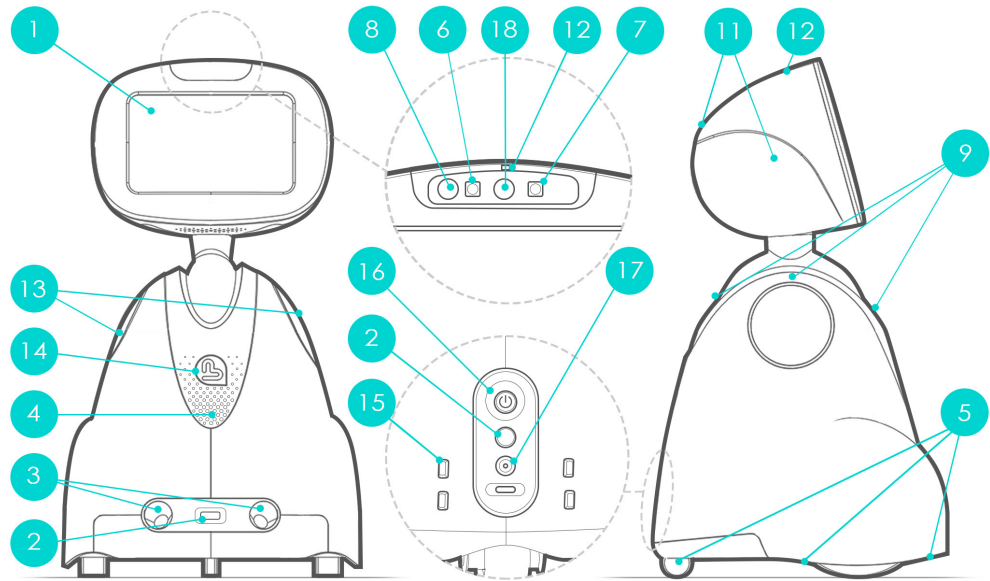
BENEFITS

- Development of robotic applications based on Android using the movements, emotional behaviors and AI capabilities of the robot
- Full access to application development resources
- Dedicated resources to launch your projects
- Technical and commercial support



CAPACITIES AND TECHNICAL SPECIFICATIONS

- See
- Hear
- Speak
- Emotions
- Feel
- Move
- Connectivity
- Communication
- Multimedia



- | | | | |
|---|----------------------|--------------------------------|--------------------|
| 1 Touch Screen 8' | 5 Cliff sensors | 9 Anti-pinch sensors | 13 Shoulders LEDs |
| 2 Infrared sensors | 6 13M Camera (130 °) | 10 Caress sensors | 14 Heart LED |
| 3 Ultrasonic sensor | 7 12M Camera (80 °) | 11 Omnidirectional microphones | 15 Load pads |
| 4 Loud speaker | 8 3D Camer | 12 Unidirectional microphone | 16 On / Off switch |
| Height: 560mm Width: 350mm Depth: 350mm | | Weight:8 Kg | 17 Power input |

BUDDY DEVELOPERS PACK



SDK

BUDDY IS WAITING FOR YOU!

Join our developer community today to grow Buddy and bring him new qualities.

Find out how to develop on Buddy, use our API or become a technology partner.

